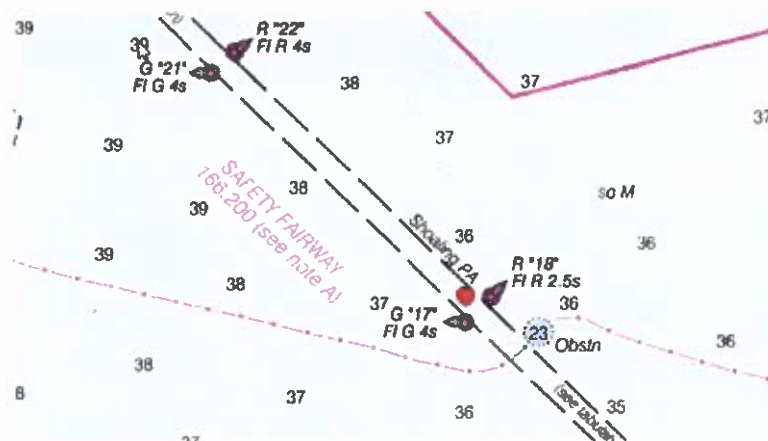




**Marine Safety Information Bulletin
43-20
October 17, 2020**

Obstruction Sabine Bank Channel - Rig JASMINIA

A large semi-submersible rig has drifted into and remains in Sabine Bank Channel near gated buoys 17 and 18.



U.S. Coast Guard and U.S. Army Corps of Engineers efforts are ongoing to expedite removal of the rig from the channel. The location of the rig prevents vessels with drafts greater than 32-feet from safely transiting within Sabine Bank Channel.

The Port Arthur Captain of the Port will schedule a Port Coordination Team Call to discuss salvage efforts, expectations and marine traffic impacts.

This notice will be posted on the HOMEPORT website <http://homeport.uscg.mil> and the VTS Port Arthur website at <https://www.atlanticarea.uscg.mil/vtspportarthur/>. If you have any questions, please call MSU Port Arthur at (409) 723-6500 or MSU Lake Charles at (337) 912-0073.

**M. A. Wike
Captain, U. S. Coast Guard
Captain of the Port**